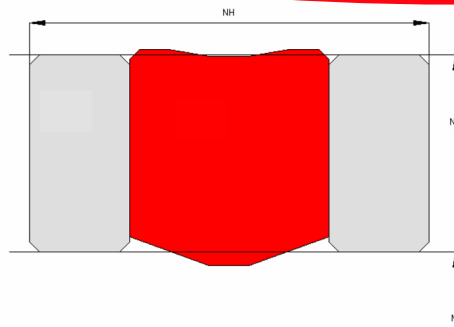


Profile Data

Rotary Seal R03



Function

Rotary seals are designed to seal the pressurized hydraulic fluid against the atmosphere, preventing leakage and pollution of the environment or to transfer liquids and/or gases from a stationary part into or out of rotating machinery.

Features

- ⇒ Asymmetrical, double acting rotary seal for high pressures and low speeds, designed with interference on the OD which provides a good static fit in the groove.
- ⇒ Dynamic sealing on the ID.
- ⇒ Backup elements on the left and right side for maintaining the function also at large sealing gaps.
- ⇒ Excellent static and dynamic sealing performance.

Application

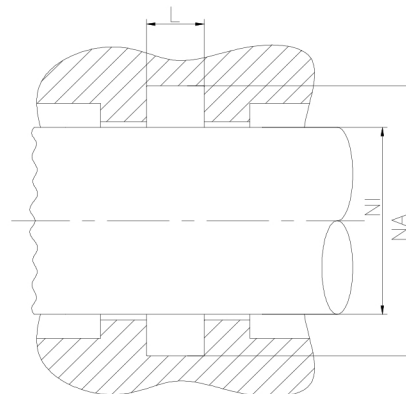
Slow moving shafts, pivoting movements, swivel or rotary joints.
Used as seal between two pressurized spaces.
Max. pressure 400 bar, max. speed 0.2 m/s.

Installation

Snap-in installation.
Backup elements shall not be split!

Seal housing recommendation

Tolerances	[mm]	
L	+ 0.2	
∅ NA	H 8	
∅ NI	f 7	
Surface roughness	Rtmax [μ]	Ra [μ]
Bottom of groove	≤ 10	≤ 1.8
Face of groove	≤ 15	≤ 3
Sliding surface	Rtmax [μ]	Ra [μ]
PU, elastomeres	≤ 2.5	≤ 0.1-0.5
PTFE	≤ 2	≤ 0.05-0.3



Sealco House, Maypole Fields Halesowen, West Midlands, UK, B63 2QB

T: (+44)1384 413058 E: sales@sealco.co.uk W: www.sealco.co.uk