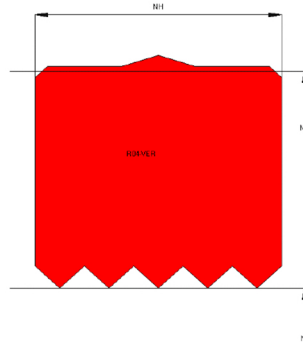


Profile Data

Rotary Seal R04A



Function

Rotary seals are designed to seal the pressurized hydraulic fluid against the atmosphere, preventing leakage and pollution of the environment or to transfer liquids and/or gases from a stationary part into or out of rotating machinery.

Features

- ⇒ Asymmetrical, double acting rotary seal, designed with interference on the OD which provides a good static fit in the groove.
- ⇒ Additional sealing edge on the OD for better static sealing.
- ⇒ Dynamic sealing on the ID.
- ⇒ Excellent static and dynamic sealing performance.
- ⇒ Low friction.

Application

Slow moving shafts, pivoting movements, revolving distributors, swivel joints.

Universal rotary seal for minor work loads.

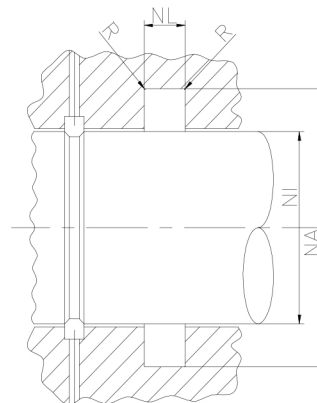
Max. pressure 160 bar, max. speed 0.2 m/s.

Installation

Snap-in installation.

Seal housing recommendation

Tolerances	[mm]	
L	+ 0.2	
∅ NA	H 8	
∅ NI	f 8	
Surface roughness	Rtmax [μ]	Ra [μ]
Bottom of groove	≤ 6.3	≤ 1.6
Face of groove	≤ 15	≤ 3
Sliding surface	Rtmax [μ]	Ra [μ]
PU, elastomeres	≤ 2.5	≤ 0.1-0.5
PTFE	≤ 2	≤ 0.05-0.3



Sealco House, Maypole Fields Halesowen, West Midlands, UK, B63 2QB

T: (+44)1384 413058 E: sales@sealco.co.uk W: www.sealco.co.uk